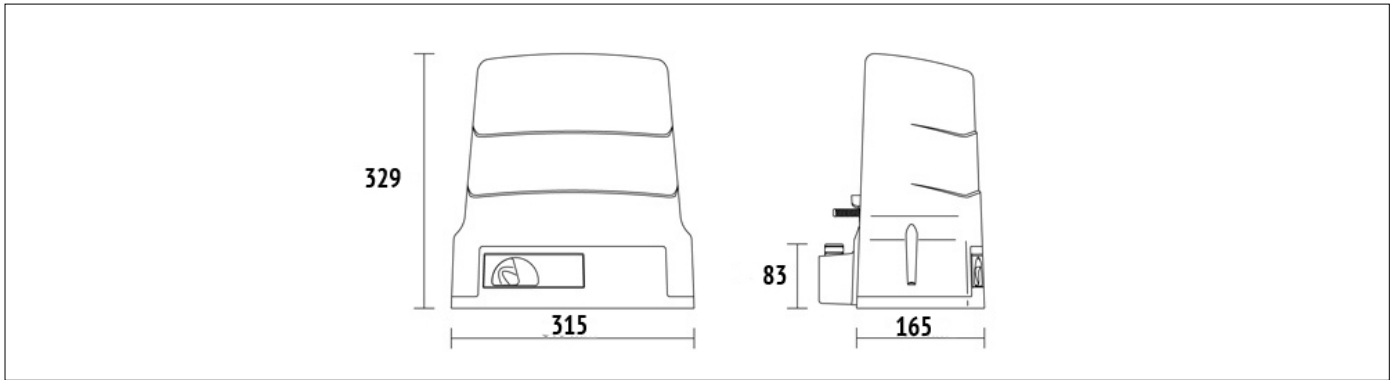




Code	Description	Pcs/pallet
BH30/604/HS	Electromechanical HIGH SPEED BRUSHLESS motor, low voltage, super intensive use, with native encoder onboard, irreversible ideal for sliding gates up to 600 kg with built-in digital controller B70 series, magnetic limit switch.	44

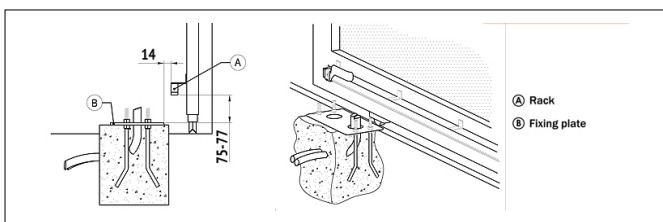
Product technical specifications	BH30/604/HS
Max gate weight	600 kg
Power line supply	230V AC - 50Hz
Motor power supply	24V
Power rating	130W
Frequency of use	Intensive use
Thrust	50 - 500N
Operating temperature	-20+55°C
Protection level	IP43
Reductor Type	Irreversible
Manoeuvre speed	24 m/min (0.4 m/s)
Limit switch	Magnetic
Onboard control unit	B70/1DC
Encoder	Digital native encoder + magnetic digital SENSORED, 4096 PPR
Batteries recovery	Optional 2 internal battery 12V 1,2AH - Optional 2 external battery 12V 4,5AH
Type exit gear	Z15/mod 4
Operating cycles per day (opening/closing - 24 hours no stop)	800
Maximum dimension product in mm (L x W x H)	315 x 165,8 x 329
Product weight packed (Kg)	11,9
Number items per pallet	44

PRODUCT DIMENSIONS

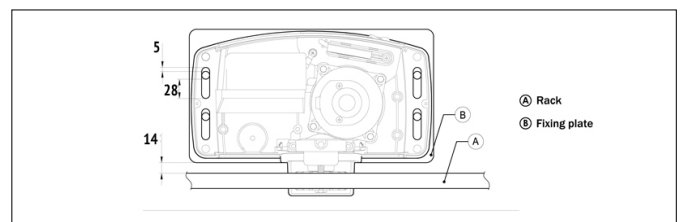


DIMENSIONS

PRODUCT PREPARING FOR INSTALLATION

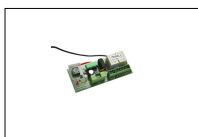


PREDISPOSITION FOR STANDARD INSTALLATION



PREDISPOSITION FOR STANDARD INSTALLATION

PRODUCT ACCESSORIES



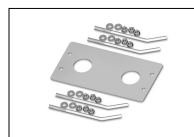
B71/BC
Batteries charger for
brushless digital
controller B70/1DC.



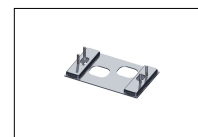
BT12V12
Pair of batteries 12V 1.2
Ah.



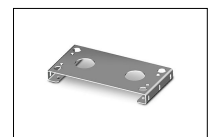
BT12V45
Pair of batteries 12V 4.5
Ah.



KT214
Fixing plate with stay
bolts and screws H30
series.



KT214/SC
Adapter plate with stay
bolts and screws H30
series.



KT221
Raised fixing plate for
H30 series (+3,5 cm).



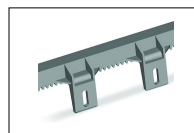
HT418
External box without
batteries, for battery
BT12V45 (12V DC 4,5 Ah)



GA550
Galvanised steel rack
22x22x1000 module 4.



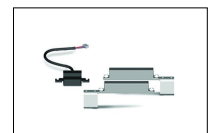
GA551
Galvanised steel rack
30x12x1000 module 4
with spacers and screws.



GA553
Nylon rack module 4 with
6 connectors L.1000.



GA554
Pocket of 6 spacers (2,5
Cm) and screws.



MC775
Kit magnetic limit switch
for control unit
H70/103AC, H70/104AC,
B70/1DC, B70/1DCHP.



R99/C/001
Signboard Automatic
Opening".