

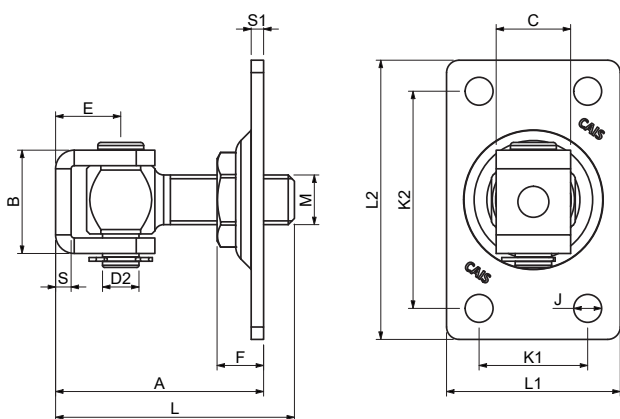
Technical report


Art.

HP 16 R



Art.	HP 16 R
Product	ADJUSTABLE HINGE WITH PLATE, FIXED
Item code	1700373
Material	Body - S 355 J2C, „C” claim - S 235 JR, Plate - S235 JR, Pin - 11SMn30, Hexagon - 11SMn30, Rivet nut - 11SMn30, Retaining ring - DIN 6799
Surface finish	ČSN EN ISO 19598 - Fe//Zn12//Cn//T2nL

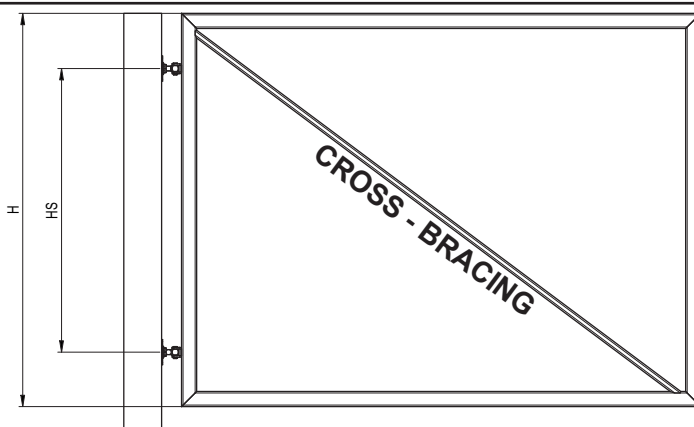


Art.	M	L1	L2	A min./max.	L	B	C	D2	E	F	J	K1	K2	S	S1	1pc		CODE	
				mm				∅	mm		∅	mm			kg	pcs	kg		
HP 16 R	M16	56	90	50 - 77	77	33	24	12	21	15	9	35	70	5	4	0,39	20	7,8	1700373

*All specifications, photographs and technical drawings are the property of CAIS s. r. o. and are protected by copyright. Product specifications can be changed without prior notice.

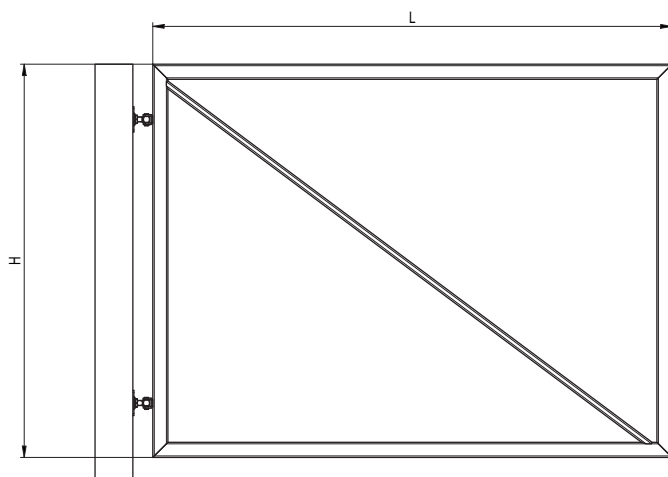
1) HINGE SPACING

HS = min. 75% H



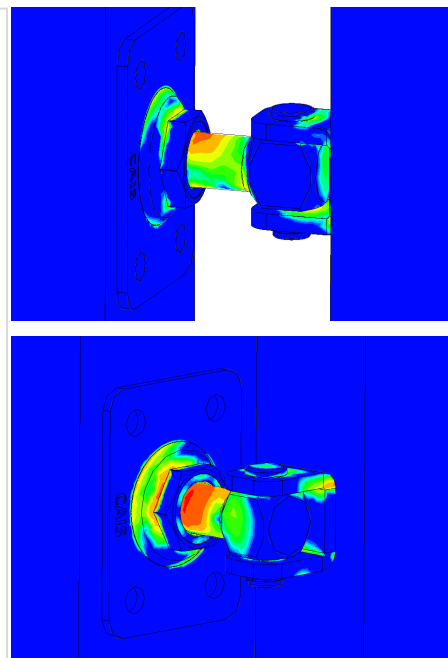
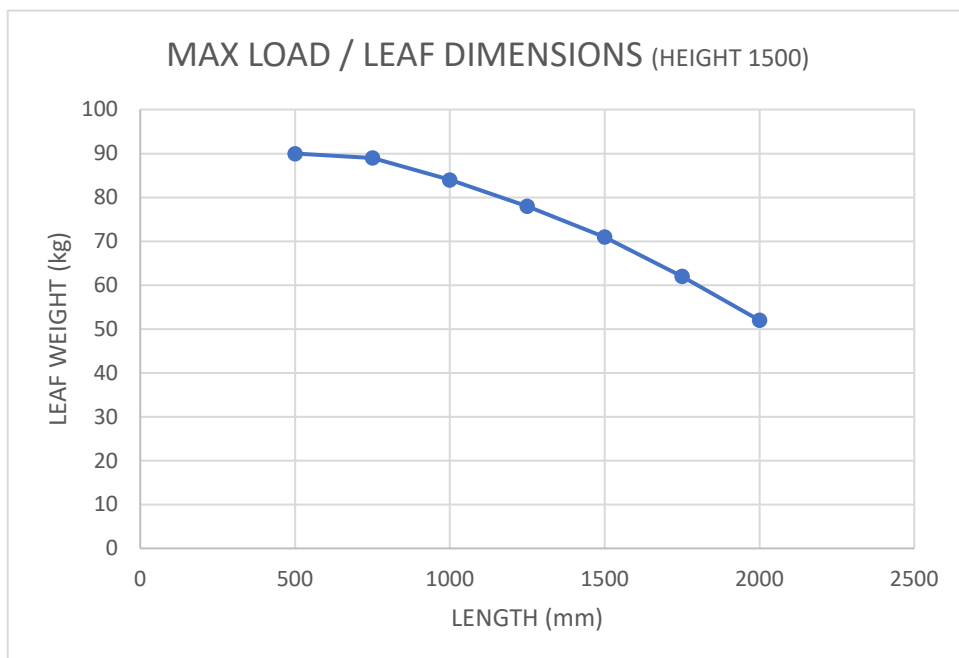
2) ASPECT RATIO

$L/H \leq 2$



3) ASPECT RATIO

$L = \text{max. } (H + 40\% H)$



Art.	"MAX WIDTH"	"MAX HEIGHT"	"MAX"	"MAX CAPACITY"	CYCLES	MAINTENANCE
	mm		m2	1 pair/kg	nr	
HP 16 R	3000	2500	5,5	145	200 000	Greasing „every 25 000 cycles / 1 times per year“

*All specifications, photographs and technical drawings are the property of CAIS s. r. o. and are protected by copyright. Product specifications can be changed without prior notice.