



BLUE OPENER

User Manual



Table of contents

Important safety instructions	3
Use of the equipment	3
Introduction	4
Connexions	5
Configuration	6
Settings Options	8
Verification	9
Solving problems	10
FAQs	10
Note	11
Technical Data	12
Regulatory Data	12
EU Declaration of conformity	12

Important safety instructions



Disconnect the power supply whenever you proceed to the installation or repair of the equipment.

In compliance with the European Low Voltage Directive, we inform you of the following requirements:

- When the devices remain permanently connected, an easily accessible connecting device must be incorporated into the wiring.
- This system must only be installed by qualified professionals that have with automated garage doors and knowledge of the relevant European standards.
- The user instructions for this device must always be in the user's possession.
- The operating frequency of the receiver does not interfere in any way with the 868 MHz remote control systems.

Use of the equipment

This device is designed for applications with an automated garage door. It is not guaranteed for the direct activation of devices other than those specified. The manufacturer reserves the right to change the device specifications without warning.

Introduction

BLUE OPENER is an access controller that opens with Bluetooth and WiFi (**BLUE OPENWAY** is necessary to activate with WiFi) to control doors fitted with electric latches, garages, turnstiles, fences and front doors by connecting the device to the automatic door opener or switch.

Its small size makes it inconspicuous, so its installation can be concealed or in inaccessible areas to hide the device.

BASIC APPLICATION SKETCH



SKETCH OF APPLICATION WITH INTERNET CONNECTION



You may view device operation and installation videos
at: www.jcm-tech.com/JCM/blue

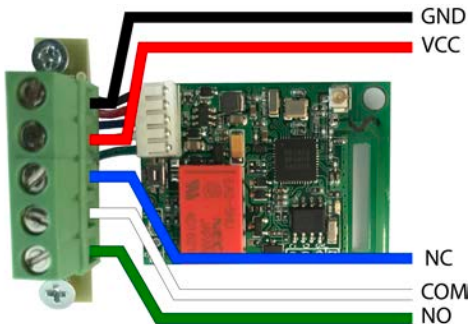
Connexions

With the power disconnected, connect the **BLUE OPENER**'s output to the device input to activate the desired relay.

Connect power to the **BLUE OPENER** with 8 / 30 V. The blue LED will blink 1s, then turn off.



NC for contact normally closed, NO for contact normally open.



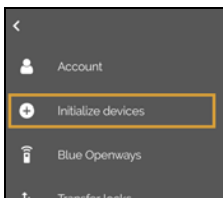
You should be able to access the plate to adjust the device's settings.

Configuration

Once properly connected, the device's settings must be adjusted. To adjust the **BLUE OPENER**'s settings, you must have the "BlueOpen" app installed on your mobile phone.



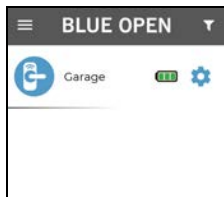
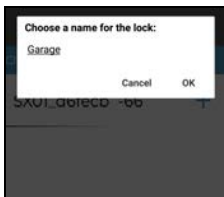
You must log in to access the app. If you do not have an account, then register. In the app, open the drop-down menu and press "Initialize devices".



Reset the **BLUE OPENER** by pressing the RESET button; the blue LED light will remain steady for 15 seconds. Select the device to start it. While starting the **BLUE OPENER**, the blue LED will blink.



Select a name for the device (e.g.: Garage Door) and press "OK". The device will appear on the list of devices under the assigned name.



Settings Options



Audit: see all device movements



Create eKey: grant another user access to the device



Manage eKeys: delete eKeys



Open remotely: open with BLUE OPENWAY



Date/Time: synchronise date and time



Set passage mode: relay activation time



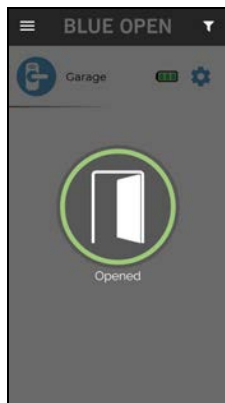
Delete device:

Verification



Bluetooth must be activated and be within range.

To verify that the **BLUE OPENER** is working correctly, open the app on your phone and press on the device.



If the **BLUE OPENER** does not activate the relay of the connected device, you must check the connection.

Solving problems

FAQs

Q: How many users can manage the equipment?

A: 7 different users may open the doors where the equipment is located (administrator + 6)

Q: What is the maximum range to activate the device?

A: Up to 10 metres, obstacle-free.

Q: The device looks grey and I can't activate it.

A: Check that Bluetooth is activated on your smartphone, that the device is connected to a power supply and that you are fewer than 10 metres away.

Q: What does the battery indicator mean?

A: As long as the equipment is powered, it will mark 100%, otherwise it will appear gray.

Q: Can I add more than one BLUE OPENER to my account?

A: Yes

Q: Some device setting options are disabled?

A: The device doesn't support all options. There are certain options that only the device administrator can use.

Technical Data

Parameter	Value
Power Supply	8 / 30 VDC
Size	66 x 32 x 22 mm
Relay outputs	1

Regulatory Data

EU Declaration of conformity

The manufacturer **OMNITEC SYSTEMS S.L.** declares that the product **BLUE OPENER** complies with the relevant fundamental requirements of the RED Directive 2014/53/EU and of the RoHS Directive 2011/65/EU.

See website <https://www.jcm-tech.com/declarations/>

OMNITEC SYSTEMS S.L.

Ctra. N-II, Km.333, c\ Tamariz 9

50171 La Puebla de Alfinden, Zaragoza

ESPAÑA

UM_3201518_BLUE-OPENER_EN_Rev03

